



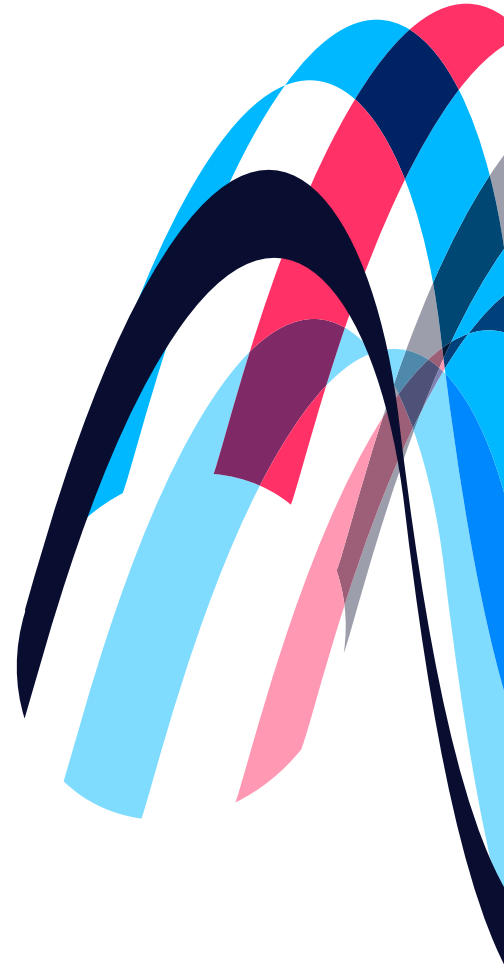
## Ethernet Backhaul

# Ethernet Backhaul

Our Ethernet services for RSPs and ISPs are point-to-point or point-to-multipoint and meet international telecommunications standards.

These are delivered over our state of the art, high performance, carrier-grade network throughout Queensland.

Our network spans more than 12,000 kilometres, stretching West from Brisbane to Toowoomba and beyond, and North through regional townships up to Cairns. Uniquely, our network is constructed within the high voltage corridor, providing a diverse option to other major carriers.



# Connecting Queensland

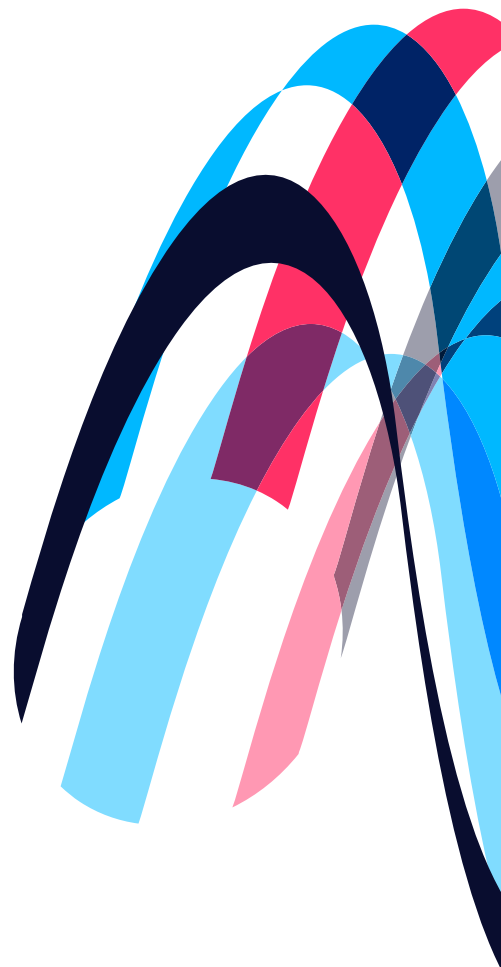
QCN Fibre is fully backed by the Queensland Government. We provide secure, diverse offerings to other carriers. Already connected to regional Queensland towns, cities and data centres, our reach is growing every day.

<b>FLEXIBLE</b>	Scale up or down as you need.
<b>EXTENSIBLE</b>	Up to 10Gps with coverage across Queensland.
<b>DEPENDABLE</b>	Backed by our SLAs.
<b>IMPENETRABLE</b>	Carrier-grade, secure network with core protection.
<b>ACCESSIBLE</b>	QCN Fibre is a lean organisation where you actually buy from the people who will support you.
<b>EXTREME LOW LATENCY</b>	Providing support for real time applications.

You get to know the team and deal with the same people from design through to operations.

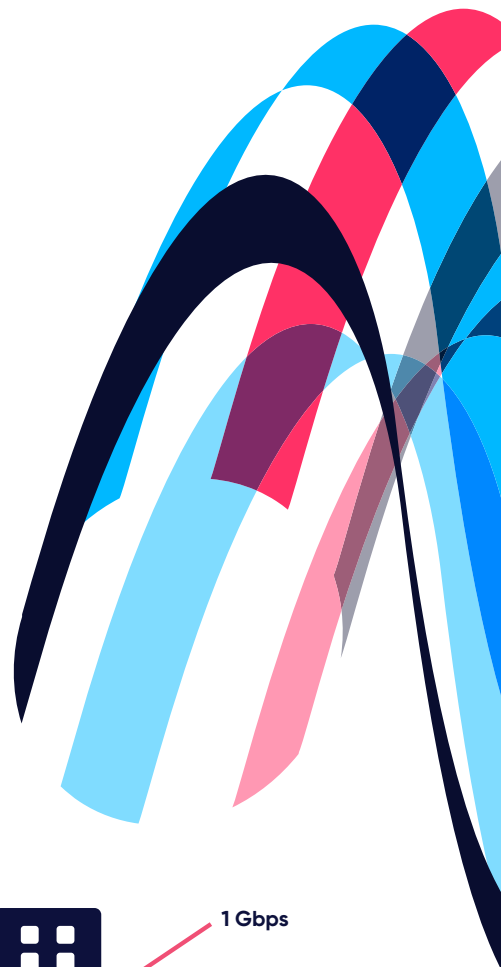
**HIGHLY SKILLED:** Our highly skilled team and their partners will help you unlock the value in your business and design the best solution for your needs.

**COMPREHENSIVE:** We deliver the whole solution – network design, facilities access, contractor management, civil works, and service testing.

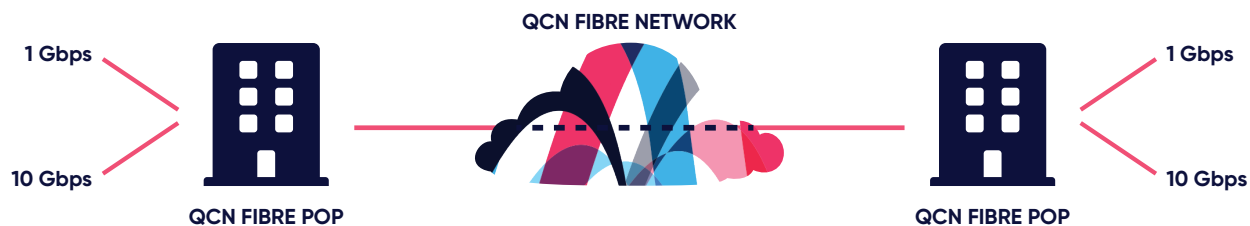


# Key Features

- **Bandwidth for your business needs** – From 10Mbps to 10Gbps, in agreed increments
- **Easy integration** – Into your network
- **Streamlined** – Low latency, high availability
- **Connect your way** – point-point and point to multipoint (E-Line EVPL) Ethernet connectivity
- **Reliable** – 24x7 Support, experienced team, and excellent SLAs.



## Point to Point



## Point to Multipoint

